



**Waikato  
wellbeing  
project**

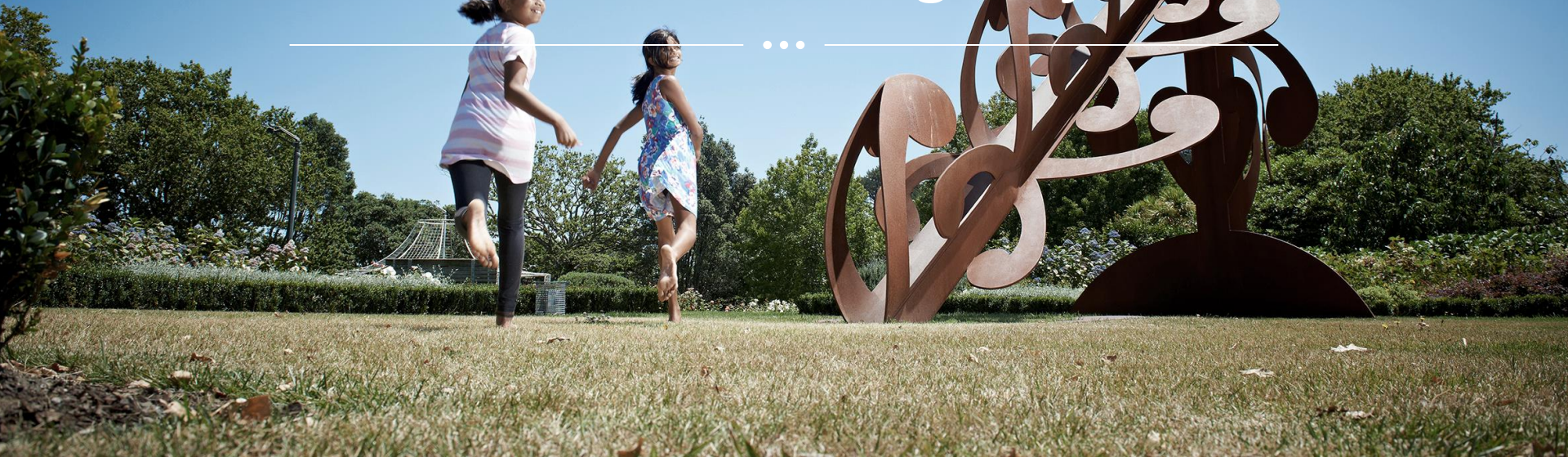
Hinonga  
toiora o  
Waikato

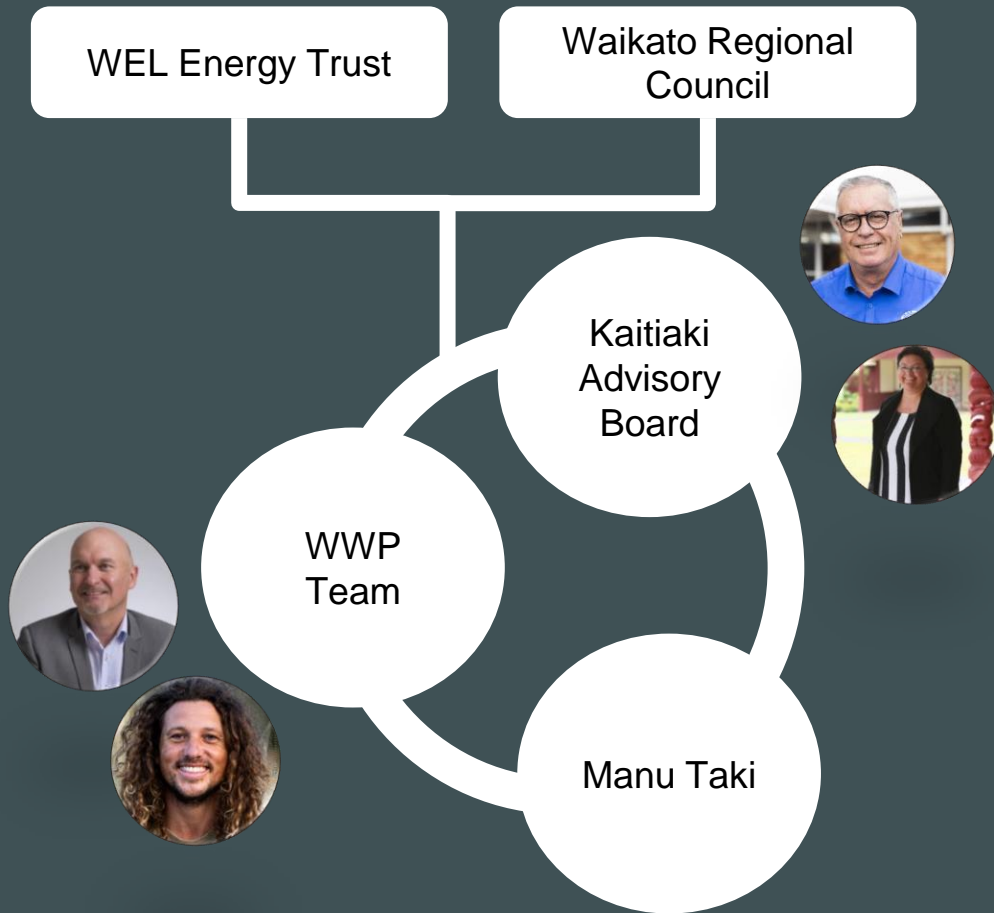
---

# Waikato Wellbeing Project

---

...







**Waikato  
wellbeing  
project** | Hinonga  
toiora o  
Waikato

## Moemoeā: Our Vision

---

Our mokopuna are thriving

## Whanonga Pono: Our Values

---

**Kaitiakitanga** - Guardianship  
**Kotahitanga** - Unity, Collective,  
Togetherness  
**Manaakitanga** - Hospitality,  
Kindness, Generosity and Support

## Haerenga: Our Mission

---

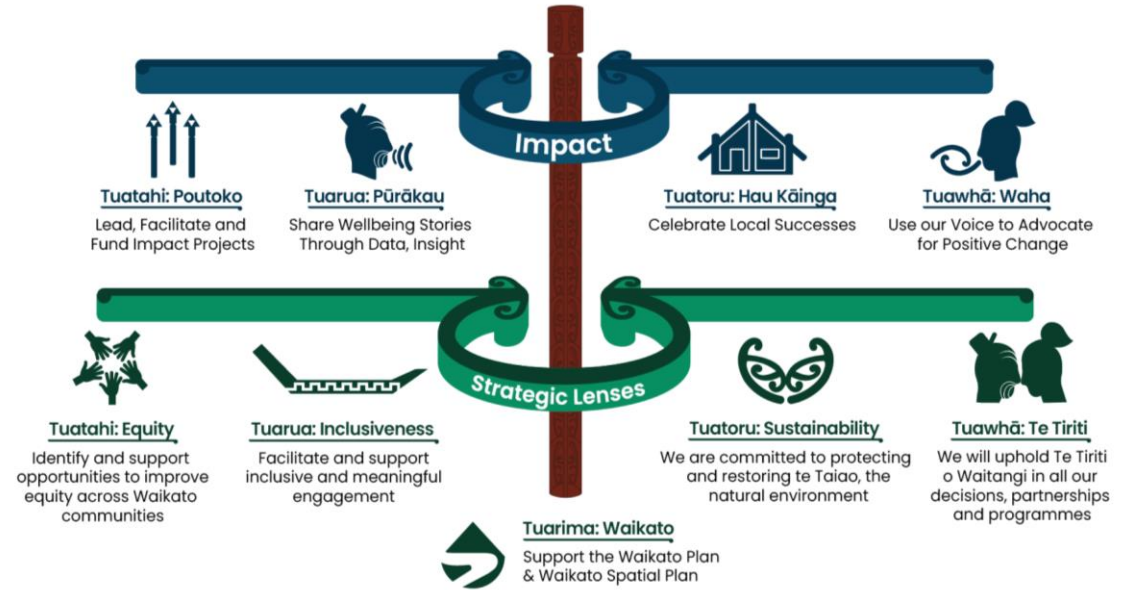
To hear our people and  
transcend their future through  
positive impact





## Whakaarotau: Our Priorities

The way we will work to facilitate insight and breakthrough, contributing to our Vision and Mission





# Tuatahi: Potoko – Lead, Facilitate and Fund Impact Projects

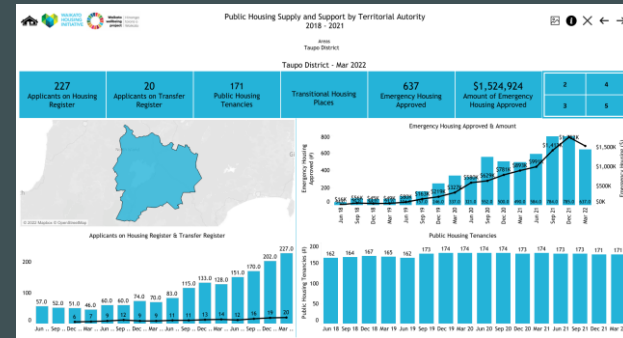
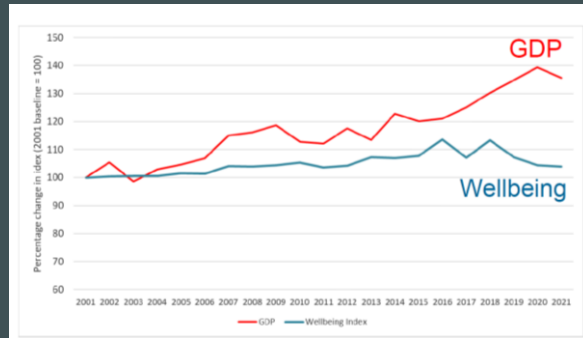


# Waikato Wellbeing Knowledge Centre | Te Ara Poutama



Tuarua: Pūrākau –  
Share Wellbeing  
Stories through  
Data and Insights

- An **easily accessed** digital ‘one stop shop’ for wellbeing data in the Waikato region, with an overall dashboard of key indicators that people can then drill into for more detail
- A **trusted** source of knowledge on our wellbeing journey - used by organisations and stakeholders right across the region – we all sing from the same song sheet
- A **relevant** resource where the data is as ‘live’/up to date as possible, measuring progress over time to guide our actions across the region





Tuatoru: Hau  
Kainga —  
Celebrate  
Local Success

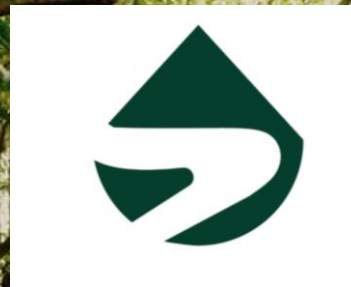




Tuawha: Waha  
– Use our voice  
to advocate for  
positive change

Both about:

- Accountability
- Being clear on roles
- Agreed impacts and outcomes
- Shared leadership
- Collaboration and coordination
- Avoiding duplication
- Maximising impact from scarce resources



Tuarima:  
Waikato –  
Support the  
Waikato Plan  
and Waikato  
Spatial Plan



A large, intricately carved wooden tiki statue stands in a lush forest. The statue is painted a reddish-brown color and features detailed black and white geometric and organic patterns. It has a prominent nose, a wide mouth, and a large, stylized ear. The background is filled with green foliage and tree trunks.

# Priorities for 2023

- Review of Progress Report- release 9 Feb
- SDG Summit 9/10 Feb 2023
- Maximise impact from 2022 insights
- Roll out operating model for hunger | kai
- Commission Wellbeing Knowledge Centre | Te Ara Poutama- link to Community Outcomes
- Launch Lots of Little Fires in early 2023
- Work with regional leaders on major wellbeing changes- e.g. review of future of local government
- Opportunities for greater efficiency and effectiveness across regional wellbeing orgs
- Address funding sustainability



He waka eke noa.  
We're all in this together.

## WAIKATO WELLBEING PROJECT

**Harvey Brookes – Executive Director**  
Harvey.brookes@waikatoregion.govt.nz  
021 913 418

[www.waikatowellbeingproject.co.nz](http://www.waikatowellbeingproject.co.nz)